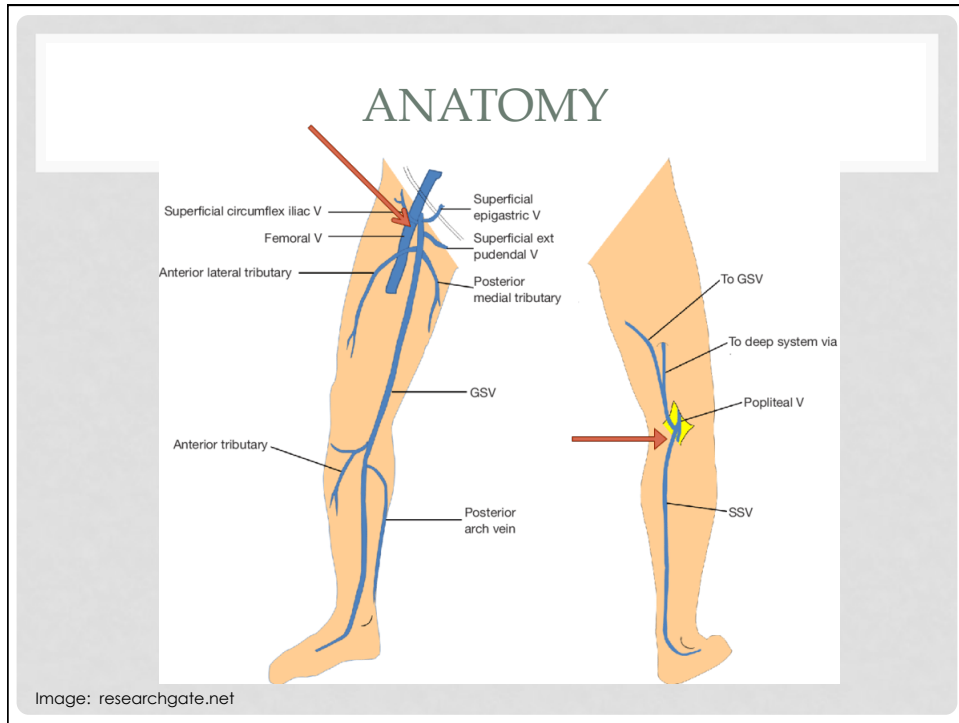


LOWER EXTREMITY DVT ASSESSMENT

MATTHEW HALDEMAN, MD MPH

OUTLINE

- Anatomy
- 2-point exam
 - Common femoral vein assessment
 - Patient positioning
 - Image findings
 - Popliteal vein assessment
 - Patient positioning
 - Image findings



CFV ASSESSMENT: PATIENT POSITION



Copyright 2019 University of South Carolina School of Medicine

CFV ASSESSMENT: ULTRASOUND FINDINGS

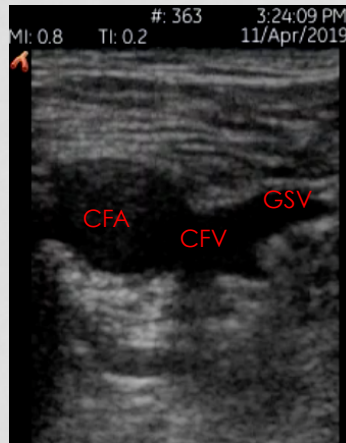
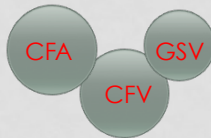
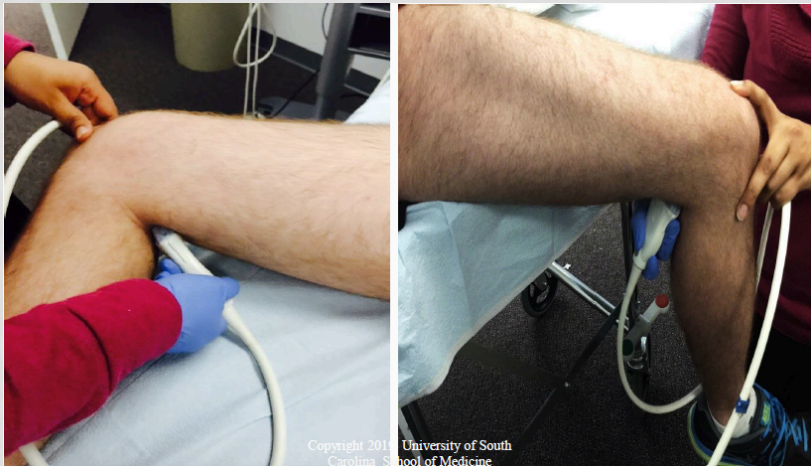


Photo: Matthew Haldeman, MD MPH

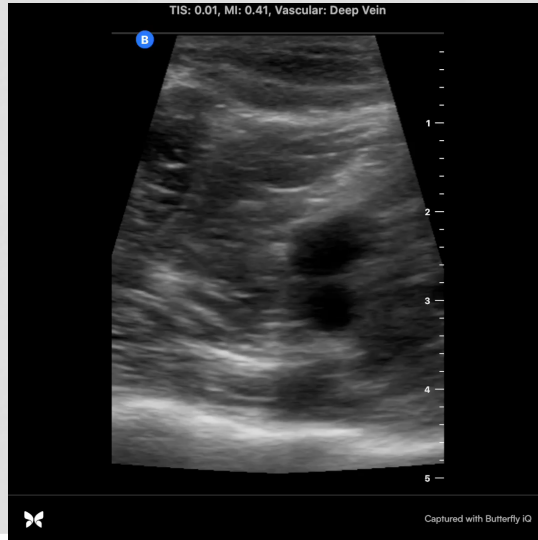
CVF ASSESSMENT: NORMAL



POPLITEAL ASSESSMENT: PATIENT POSITION



POPLITEAL ASSESSMENT: ULTRASOUND FINDINGS



CFV: CLOT PRESENT



CFV: CLOT PRESENT



DVT ASSESSMENT: POSITIVE FINDINGS

- Vein does NOT completely collapse with probe pressure
- Can see echogenic material in the vein lumen
- Filling defect OR absent flow on color doppler

PITFALLS: LYMPH NODE



Image: researchgate.net

PITFALLS: BAKER'S CYST



Image: radiopedia.org

